

VU CAFÉ NOODLE HOUSE

CATERING/ FUNCTION MENU



❖ MORNING TEA/ AFTERNOON TEA

All packages for a minimum of 10 people with Tea & Coffee

Sweets- \$10.50 per person

Choose two of following:

- ✓ *Mini Muffins*
- ✓ *Mini Danishes*
- ✓ *Banana Breads*
- ✓ *Carrot Cakes*



Sweets- \$15.00 per person

Choose four of following:

- ✓ *Mini Muffins*
- ✓ *Mini Danishes*
- ✓ *Banana Breads*
- ✓ *Carrot Cakes*
- ✓ *Two fruit platter for the table*
- ✓ *Cookies*



□ **Sandwich/ Wraps/Rolls platter- \$14.50 per person**

Choose three of following:

- ✓ *Point S/W/R with Chicken, avocado, salad*
- ✓ *Point S/W/R with Turkey, cranberry sauce, salad*
- ✓ *Point S/W/R with Hams, avocado, salad*
- ✓ *Point S/W/R with Egg , Mayonnaise, salad*
- ✓ *Point S/W/R with Sundried tomato, Eggplant, Avocado, salad*



❖ LUNCH BUFFET

All packages for a minimum of 25 people, \$21.00 per person

Cold lunch Buffets

Choose three of following:

- ✓ *Sushi platter*
- ✓ *Sandwiches platter*
- ✓ *Wraps platter*
- ✓ *Vietnamese Rolls platter*
- ✓ *Greek salad platter*
- ✓ *Caesar salad platter*



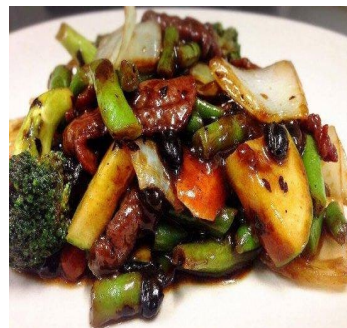
Hot lunch Buffets (freshly cooked)

Choose four of the following:

- ✓ *Special Fried Rice platter*
- ✓ *Stir Fried Noodles platter*
- ✓ *BBQ Chicken platter*
- ✓ *Salty Fried Chicken platter*
- ✓ *Beef Black beans platter*
- ✓ *Honey Chicken platter*
- ✓ *Teriyaki Chicken platter*
- ✓ *Satay Chicken platter*
- ✓ *Vegetarian spring rolls platter*

Dessert

- ✓ *Fruit platter*



❖ TERMS AND CONDITIONS FOR CATERINGS/ FUNCTIONS

- *All catering/ function orders attract an additional 10% GST surcharge*
- *Changes to orders must be made in one business day before the catering/ function*
- *Minimum of 2 business days' notice required for any cancellation. Cancellations that do not meet the criteria will require a payment of 30% the total order before GST*
- *Finish/ Clearance time placed on the order will be the time the rooms are cleared unless specified prior.*
- *All equipment delivered with the function need to be ready for collection after completion*
- *If equipment is misplaced or damaged, a replacement charge will be incurred*
- *A fee of \$15 is applicable for each delivery*

Hours:

**Monday- Friday
7:30am-7:00pm**

Enquires:

**Building M, Level 1
Victoria University
Footscray Park Campus
Ballarat Road Footscray
9919 4339 or Call Andy 0421 037 152**

******Any changes or extra requirements please feel free to discuss with Mr. Andy!***

All prices are subject to change without notice